

CRANE 120



The Goliath among our light cranes!

Highest ABC-Light-Crane

up to 12 m (39.3 ft) Total length

Payload up to 25 kg

Extremely light and rigid

Set-up in less than 20 minutes

Possible one man operation for Crane,
Remote head and Camera (Zoom & Focus)

Up to 6 different assembly lengths
(12 / 10,5 / 9 / 7 / 5,5 / 4 versions)
incl. strengthened rig sets

Packed length only 1,80 m (5.91 ft)

Use of round or square counterweights

MADE
IN
GERMANY

starting at
8,400 €
For 7m Version



Events



Documentary



Football



HIGHLIGHTS



Crane Head



Integrated 80mm mount for positioning of ABC Remote Heads allows 360° turns.
Crane head is also available with Mitchell Adapter.
Precise Levelling of crane head.

Rotation section



Including vertical and horizontal break system.
The built-in high precision pivot bearing allows a smooth and constant rotary motion.

Crane segments



A specially engineered square tube construction provides extreme rigidity and light weight. Additionally, crane segments are bolted together for an optimum resistance to torsion!
Circular spaces in the segments allow weight reduction.

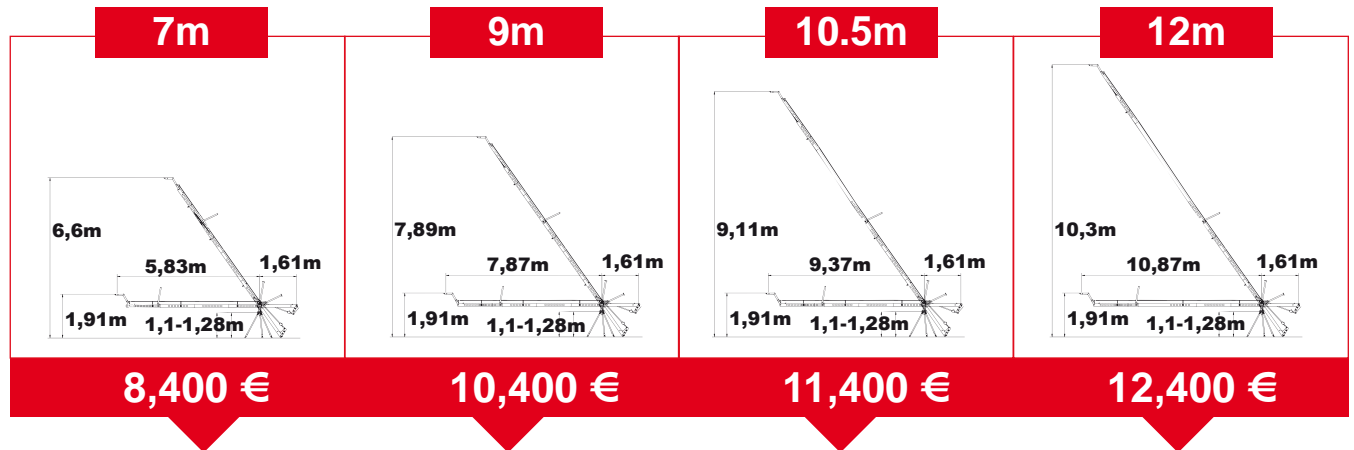


Weight support segment

Suitable for round and angled weights.
Easy mount for single operator kit.

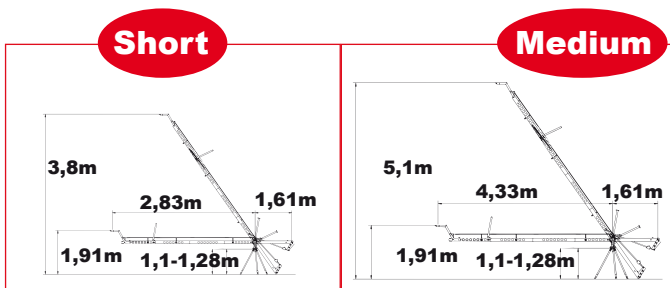


VERSIONS & PRICES



Weight Crane only	72 kg	83 kg	93 kg	116 kg
Packing dimensions (cm)	2 pcs: 177x37x29 1 pc: 80x55x25	2 pcs: 177x37x29 1 pc: 80x55x25	2 pcs: 177x37x29 1 pc: 80x55x25	3 pcs: 177x37x29 1 pc: 80x55x25
Max. payload	30 kg	25 kg	20 kg	20 kg
Counterweight	160 kg	160 kg	208 kg	288 kg
Reference	8315-03	8315-0	8315-01	8315-02
Possible versions	3 versions: Short Medium Large (7m)	4 versions: Short Medium Large (7m) 9m	5 versions: Short Medium Large (7m) 9m 10.5m	6 versions: Short Medium Large (7m) 9m 10.5m 12m

Short and Medium versions dimensions :



Package includes:

- ▶ Camera crane arm with rotation section and Weight support segment.
- ▶ 1 Manual
- ▶ 3 Soft bags

ACCESSORIES

Remote heads

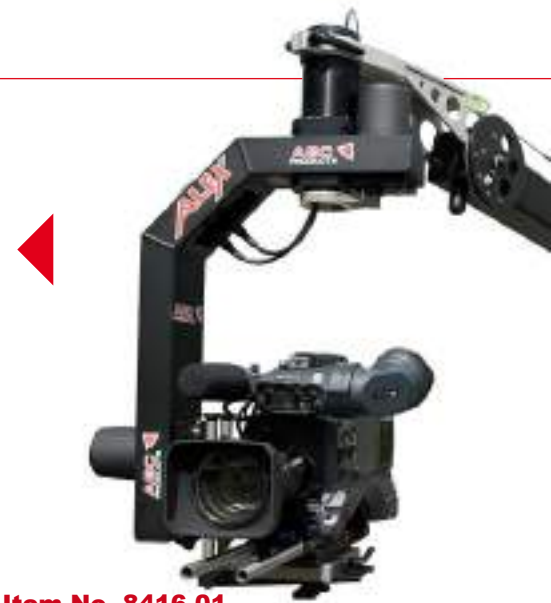


Item No. 8416-0

Alex analog

Robust Remote Head
Cameras up to 15kg
Net weight 6kg

Price: 5,950 €



Item No. 8416-01

Alex digital

**Price: starting at
8,250 €**

Robust broadcast remote head
Cameras up to 15kg
Net weight 6kg
With V-mount battery adapter
With programmable motors
Possibility of one-man control* (accessories)
Possibility of controlling camera zoom and focus* (accessories)



Pelé XL 35

Light Digital Remote-Head system
Cameras up to 20kg
Net weight 9kg
With V-mount battery adapter
With programmable motors

Possibility of one-man control* (accessories)
Possibility of controlling camera zoom and focus* (accessories)

*When lenses for broadcast with integrated motors are used



Item No. 8418-0

**Price: starting at
10,800 €**



Item No. 8472-0/8472-01

P10 - 2 or 3 Axis

Extremely silent movement
Cameras up to 25 kg for 2-Axis Version
Cameras up to 15 kg for 3-Axis Version
Very fast movement

Price: starting at **19,800 €**

Remote heads



Item No. 8472-8700

Flight case for P10

Robust flight case with wheels
Including a foam insert, intermediate base,
and storage compartments for cables
and accessories.

Size: 110x75x35 cm

Weight: 21,5kg

Price: **619.99 €**

**Accessories for remote heads
Alex Digital/Pelé/P10-2 or 3 axis:**

Cable set* Canon SD

Item No. 841210-0 **270 €**

Cable set* Canon HD

Item No. 841212-0 **320 €**

Cable set* Canon HD-S

Item No. 841213-0 **380 €**

Cable set* Fujinon SD/HD

Item No. 841220-0 **220 €**

Cable set* Angenieux

Item No. 841215-0 **270 €**

Single man control for Crane 120

Item No. 8414-0 **1,950 €**

**Power supply 220 V
switchable to 110 V / 24 V DC**

Item No. 8412-500 **980 €**

*The cable set includes zoom and focus control cables
for broadcast, with integrated motors.

Tripod



Item No. 8321-03

Bullstand

Heavy duty tripod with levelling system
Safety pins for Crane 100/120
Max. payload : 250kg

Price: **1,450 €**



Item No.
7703-0 / 7707-0 / 7715-0

Counterweights

4 / 8 / 16 kg
30mm Ø hole
Handle for light transport

Price: **45 / 55 / 75 €**



Item No.
8315-30

Monitor holder

For crane 120
Two fixing screws and swiveling arm

Price: **230 €**

Dollies



Item No.
7510-0SET

Base Dolly CD 5

Standard Base Dolly CD 5 incl. crane column
 for crane 120 with extension

- ▶ Base frame
- ▶ Pneumatic or Studio wheels 4 pcs.
- ▶ Push bar
- ▶ Crane column

Price: starting at 4,120 €



**Base Dolly CD5
 with crane column**



Item No. 7511-0

Track wheels CD 5

Price: 2,490 €



Item No. 7510-4000

Platform for CD5

Price: 1,190 €



Item No. 7513-0

**Base plate Euro
 turnstile mount**

Price: 1,950 €



Item No. 7520-0SET

**Levelling legs
 for CD5**

Price: 690 €



Item No.
7530-0SET

Base Dolly CD 6

Broad basis Dolly CD 6 incl. crane column
 for crane 120 with extension

- ▶ Base frame
- ▶ Pneumatic or Studio wheels 4 pcs.
- ▶ Push bar
- ▶ Crane column

Price: starting at 4,340 €



**Base Dolly CD6
 with crane column**



Item No. 7532-0SET

Track wheels CD6

Price: 2,490 €



Item No. 7530-300

Platform for CD6

Price: 1,290 €



Item No. 7513-0

**Base plate Euro
 turnstile mount**

Price: 1,950 €



Item No. 7531-0SET

**Levelling legs
 for CD6**

Price: 860 €

MovieTech

www.movietech.de

The MovieTech AG is based in Munich with subsidiaries in Balerna and Prague. As one of the leading manufacturers in its field, it produces and markets products and solutions for the film industry. The MovieTech product range concentrates on the areas of: Camera cranes, dollies, remote heads and corresponding accessories, as well as studio and stage techniques.

The company's mission is to manufacture professional film and studio equipment that facilitates the implementation of creative ideas and simplifies the work on the set or in the studio.

MovieTech

Dollies - Cranes - Remote Heads



www.movietech.de

ABC **PRODUCTS**

Steadycam systems - Light dollies - Light cranes



www.abc-products.de

MTS **Media Technical System**

Pantographs - Hoists - Telescopes - Trolleys



www.mts-germany.com

LASTRO **ENGINEERING**

Rail systems - Studio and stage engineering



www.lastro.de